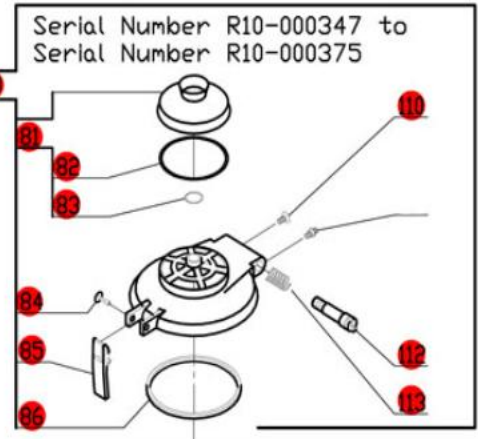
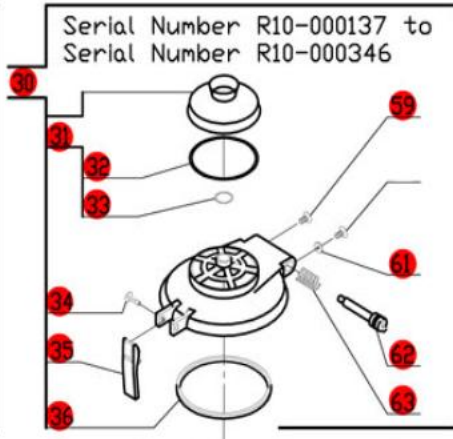
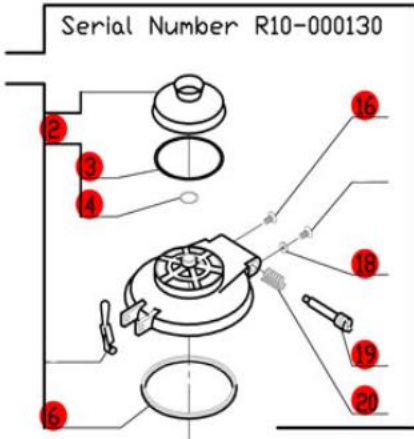
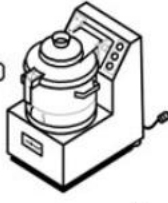


R10 (ETL)

2-Speed, 208-240 Volt, 3 Phase, 60Hz.,
 Low Speed- 1725 RPM, 9 Amp, 3 HP.
 High Speed- 3450 RPM, 12.5 Amp, 4.5 HP.
Machines with serial numbers R10-000385 and below.

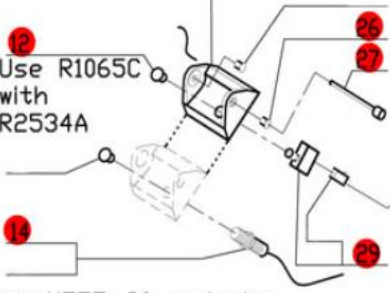
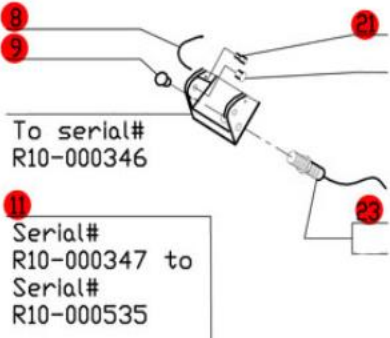
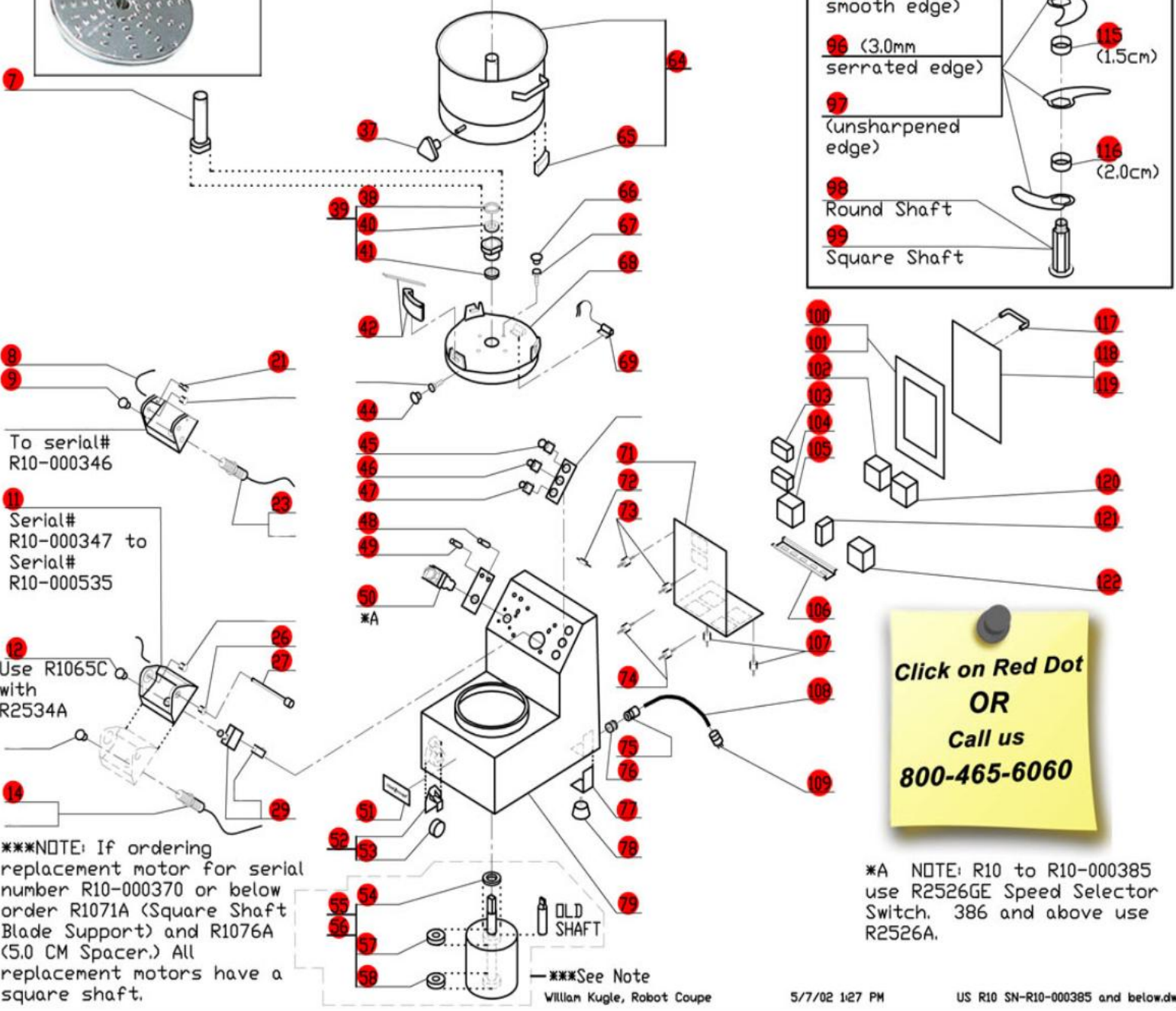
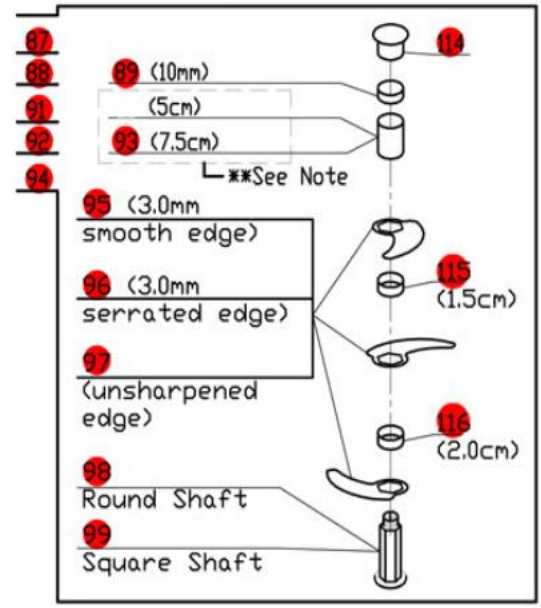
NOTE: If ordering replacement motor for serial number R10-000370 or below, order R1071A (Square Shaft Blade Support) and R1076A (5.0 CM Spacer.)



CLICK HERE FOR DISCS



***NOTE: When using part number R1071 (round shaft blade support), use part number R1076 (7.5cm spacer). When using part number R1071A (square shaft blade support), Use Part number R1076A (5.0cm spacer).



***NOTE: If ordering replacement motor for serial number R10-000370 or below order R1071A (Square Shaft Blade Support) and R1076A (5.0 CM Spacer.) All replacement motors have a square shaft.

Click on Red Dot OR Call us 800-465-6060

*A NOTE: R10 to R10-000385 use R2526GE Speed Selector Switch. 386 and above use R2526A.